

PN405



Detectable Pen Standard

HS.MD-405-2-2

- Retractable nib.
- Replaceable refill of high capacity.
- Design with square section to avoid rolling down on a slopy surface.
- Available with or without clip.
- Number of parts reduced to minimum (3psc).

PN520



Detectable Pen One

HS.MD-520-2-2

- One piece body - no possibility to dismantle into pieces.
- Design with square section to avoid rolling down on a slopy surface.
- Available with or without clip.
- No possibility to replace refill.

P0554



Detectable Marker Fineliner

HS.MD-0554-2-6

- Two writing nibs of different width.
- Permanent ink suitable for writing, on most surfaces.
- Made of special detectable plastic compound detectable both on metal detector and on X-ray.

P0353



Detectable Permanent Marker

HS.MD-0353-2-3 HS.MD-0353-2-6

- Available with bullet and chisel nib.
- Suitable for writing on most surfaces.
- Possibility of wiping only with solvent.

P0116 ②



Detectable Safety Knife Smartcut

HS.MD-0116-2

- Meets requirements of HACCP, BRC, IFS and other food safety standards recognised under Global Food Safety Initiative.
- Made of special detectable plastic compound detectable both on metal detector and on X-ray.
- Retractable blade which automatically hides when retractable button is released by employee.

P1974 ②



Detectable Safety Knife Polycut

HS.MD-1974-2

- Meets requirements of HACCP, BRC, IFS and other food safety standards recognised under Global Food Safety Initiative.
- Made of special detectable plastic compound detectable both on metal detector and on X-ray.
- Hidden blade to protect from accidental cuts.
- Blue colour to make it visually detectable as blue contrasting colour normally does not occur in food products.

P0174 ②



P0170 ②

Detectable Measuring Scoops

HS.MD-0174-2 **1000g** **360x160**

HS.MD-0170-2 **500g** **310x138**

- Metal and x-ray detectable rectangular scoops, colour coded and available in five colours and two capacities (500g and 1000g).
- Made of special detectable plastic compound detectable both on metal detector and on X-ray.
- Made of one single piece of extremely flexible detectable plastic which makes it very difficult to break it into pieces.

P0498 ②

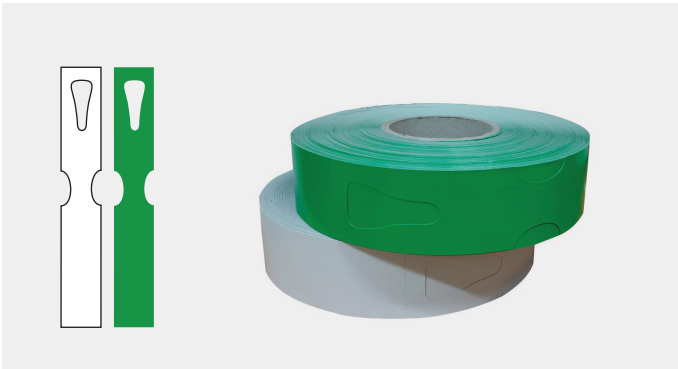


Detectable Shovel

HS.MD-0498-2 **1120/380x330**

- Metal and x-ray detectable shovel moulded as one-piece article for ultimate strength.
- Ergonomically designed handle avoids undue bending, and maintains better posture than traditional shovel designs, leaving operatives less tired.
- Made of one single piece of extremely flexible detectable plastic which makes it very difficult to break it into pieces.

P0120 2 2



Detectable Paper Labels

HS.MD-0120-1 49x286 mm

HS.MD-0120-5 49x286 mm

- Meets requirements of HACCP, BRC, IFS and other food safety standards recognised under Global Food Safety Initiative.
- Detectable due to aluminium foil used in product.
- Individual printing possible on detectable paper labels (minimum order quantity applies).

P2950 2



Detectable Shoe Cover

HS.MD-2950-2

- Detectable shoe covers made of polyethylene with aluminium foil strip to make it detectable.
- Meets requirements of HACCP, BRC, IFS and other food safety standards recognised under Global Food Safety Initiative.
- Detectable due to aluminium foil used in product.

P0140 2

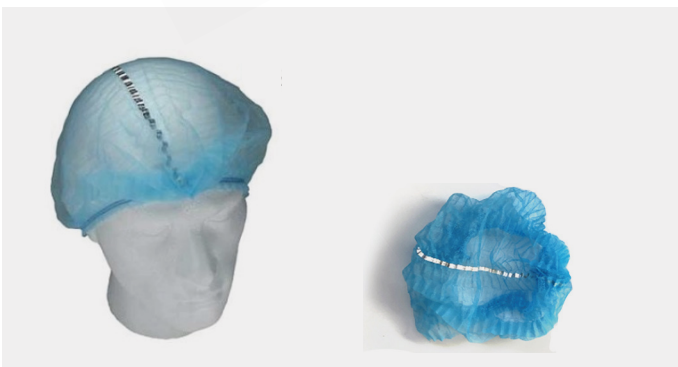


Detectable Sleeve Covers

MD-0140-2

- Detectable sleeve covers made of polyethylene with aluminium foil strip to make it detectable.
- Meets requirements of HACCP, BRC, IFS and other food safety standards recognised under Global Food Safety Initiative.
- Detectable due to aluminium foil used in product.

P0135 2



Detectable Mob Caps

HS.MD-0135-2

- Metal detectable colour coded mob caps made of strong 14gsm nonwoven.
- Universal size with double elastic to ensure detectable mob cap covers correctly all hair.
- Meets requirements of HACCP, BRC, IFS and other food safety standards recognised under Global Food Safety Initiative.
- Detectable due to aluminium foil used in product.